

# SWACE

## GENUINE ACCESSORIES

Suzuki Genuine Accessories have been specially designed for Suzuki cars and are subject to the same quality standards as the car. Please note that only Suzuki Genuine Accessories have been tested and cleared for use by Suzuki. The necessary instructions can be found in the relevant manuals. It is possible under some circumstances that the installation and/or use of other accessory parts could have a negative effect on the structural characteristics of your car and thus reduce driving safety. Suzuki cannot accept any liability for damage caused by the use of accessories other than Suzuki Genuine Accessories.



On publication of this brochure all earlier information ceases to be valid. Some of the brochure's illustrations show special equipment.

**Suzuki's "Way of Life!" is the heart of our brand - every Suzuki vehicle, motorcycle and outboard motor is built to create excitement so customers can enjoy everyday life.**



The details given in this brochure are non-binding and are purely for informational purposes. Errors excepted.

We kindly ask you to make sure that all legal requirements are fulfilled in your country when using the range of Suzuki accessories.

Last update: February 2021

SUZUKI MOTOR CORPORATION reserves the right, without notice, to make any changes, modifications, to re-design or discontinue any item at any time.  
Some catalog items may not comply with local standards or statutory requirements. Please check your local regulation before ordering and installing accessories from this catalog.  
Actual colors or packaging may differ from those appearing in this catalog.

©SUZUKI MOTOR CORPORATION All rights reserved.

**SUZUKI MOTOR CORPORATION**  
300 Takatsuka-cho, Minami-ku, Hamamatsu-shi, Shizuoka 432-8611 Japan  
[www.globalsuzuki.com](http://www.globalsuzuki.com)



# CERTIFIED ACCESSORY PACKAGES <sup>1</sup>

- A** CHROME TRIM SET (Item No.1 + 2)  
Part No. 99SET-54Z00-S01
- B** RED DECOR SET (Item No.3 + 4 + 5)  
Part No. 99SET-54Z00-S02
- C** TOW BAR with E-KIT 7-PIN (Item No.6 + 7)  
Part No. 99SET-54Z00-S03
- D** TOW BAR with E-KIT 13-PIN (Item No.6 + 9)  
Part No. 99SET-54Z00-S04
- E** TOW BAR with E-KIT 7-PIN & LOADING EDGE PROTECTION (Item No.6 + 7 + 14)  
Part No. 99SET-54Z00-S05
- F** TOW BAR with E-KIT 13-PIN & LOADING EDGE PROTECTION (Item No.6 + 9 + 14)  
Part No. 99SET-54Z00-S06
- G** PROTECTION DUO 1 (MUD FLAP) (Item No.12 + 14)  
Part No. 99SET-54Z00-S07
- H** PROTECTION DUO 2 (SIDE MOULDING) (Item No.13 + 14)  
Part No. 99SET-54Z00-S08
- I** PROTECTION TRIO (Item No.12 + 13 + 14)  
Part No. 99SET-54Z00-S09

## MEANING OF INDICATORS

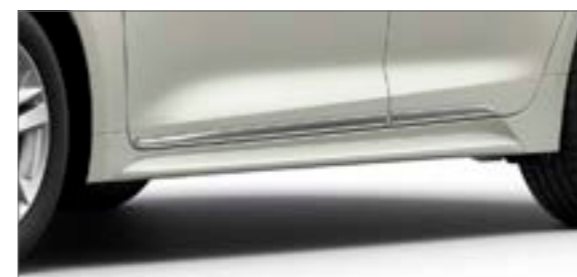
**A** : The item is included in the package.

**A** : The item is NOT included in the package.

**WVTA** : The item is certified under WVTA. <sup>2</sup>

<sup>1</sup>: Not in combination with each other.  
<sup>2</sup>: Installation of WVTA certified items has to be performed at a certified location which is capable for ensuring CoP (Conformity of Production) of a vehicle.

## EXTERIOR



**1 | Side Body Garnish (Chrome)** **WVTA**  
Four-piece set, made of ABS.  
Part No. 99002-54Z00-010  
**A B C D E F G H I**



**2 | Back Door Garnish (Chrome)** **WVTA**  
Made of ABS  
Part No. 99002-54Z00-008  
**A B C D E F G H I**



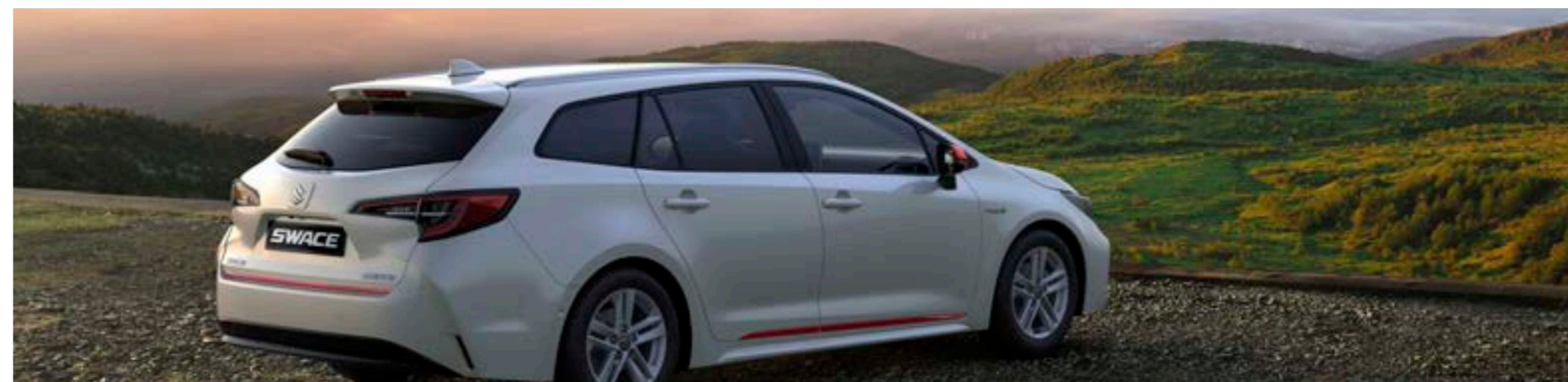
**3 | Side Body Garnish (Red)** **WVTA**  
Four-piece set, made of ABS.  
Part No. 99002-54Z00-011  
**A B C D E F G H I**



**4 | Back Door Garnish (Red)** **WVTA**  
Made of ABS  
Part No. 99002-54Z00-009  
**A B C D E F G H I**



**5 | Mirror Cover (Red)** **WVTA**  
Two-piece set  
Part No. 99002-54Z00-007  
**A B C D E F G H I**



## TRANSPORTATION



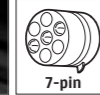
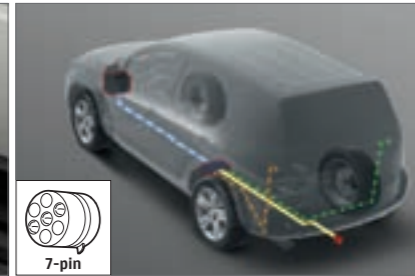
### 6 | Tow Bar Detachable - Vertical<sup>1</sup> WVTA

Maximum towing capacity: 750kg (with brake)  
450kg (without brake)

Maximum vertical load: 75kg

Part No. 99002-54Z00-021

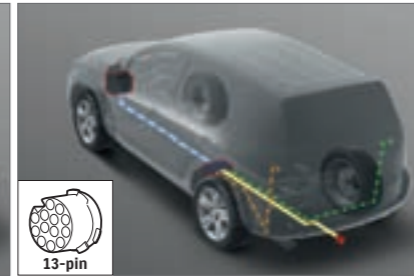
A B C D E F G H I



### 7 | Tow Bar E-kit 7-pin WVTA

Part No. 99002-54Z00-025

A B C D E F G H I



### 9 | Tow Bar E-kit 13-pin WVTA

Part No. 99002-54Z00-024

A B C D E F G H I

### 8 | Adapter, 7-pin to 13-pin

To connect 7-pin plug to 13-pin socket.  
Part No. 99002-54Z00-028



### 10 | Adapter, 13-pin to 7-pin

To connect 13-pin plug to 7-pin socket.  
Part No. 99002-54Z00-027



### 11 | Adapter, 13-pin to 12N/12S

To connect 13-pin plug to 12N/12S socket.

Part No. 99002-54Z00-026



## PROTECTION



### 12 | Mud Flap, Rigid WVTA

Black, four-piece set, for front and rear.

Part No. 99002-54Z00-018

A B C D E F G H I



### 13 | Side Moulding WVTA

Black, four-piece set, made of PP.

Part No. 99002-54Z00-006

A B C D E F G H I



### 14 | Loading Edge Protection WVTA

Black, made of PP.

Part No. 99002-54Z00-005

A B C D E F G H I



<sup>1</sup>: Please consult your vehicle owner's manual for further information.

## USEFUL THINGS



**15 | Multi Roof Rack**  
With "S SUZUKI" logo.  
Own weight : 5kg  
MAX roof load of vehicle : 75kg  
Part No. 99002-54Z00-019



**16 | Side Sill Scuff**  
With "HYBRID" logo. Brushed aluminum, four-piece set.  
Part No. 99002-54Z00-020



**17 | Cargo Net - Vertical**  
For complete installation, both Cargo Net - Vertical and Fitting kit for Cargo Net - Vertical (x2) are required.  
Part No. 99002-54Z00-002

**Fitting kit for Cargo Net - Vertical**  
One piece. Two fitting kits are required for complete installation.  
Part No. 99002-54Z00-032



**18 | Cargo Net - Horizontal**  
Part No. 99002-54Z00-001



**19 | Rear Bumper Protection Film**  
Transparent  
Part No. 99002-54Z00-004



**20 | Door Handle Protection Film**  
Transparent, two-piece set.  
Part No. 99002-54Z00-003



**21 | Winter Rim 16"**  
Steel, w/o center wheel cap.  
Part No. 99002-54Z00-023

**Nut for Winter Rim 16"**  
Exclusive for winter rim, NOT compatible with OE wheel. One piece.  
Part No. 99002-54Z00-033

**TPMS kit**  
Four-piece set with fitting parts  
Part No. 99002-54Z00-034



**22 | Wheel Lock Nut**  
Part No. 99002-54Z00-029



**23 | Key Cover**  
Silver, exclusive for SWACE.  
Part No. 99002-54Z00-016

